

*Hustler Z BAC-VAC™
Owner's Manual*



HUSTLER®
TURF EQUIPMENT

TABLE OF CONTENTS

- 1. General Information.....Sect. 1

- 2. Safety Precautions.....Sect. 2

- 3. Assembly Instructions.....Sect. 3

- 4. Operation.....Sect. 4

- 5. Maintenance.....Sect. 5

- 6. Storage and Technical Specifications.....Sect.6

- 7. Index.....Sect. 7

GENERAL INFORMATION

This manual applies to the following equipment:

Hustler XR7 BAC-VAC™, 928218
Hustler Z 54" XR7 Deck Adapter, 107110
Hustler Z 60" XR7 Deck Adapter, 107128
Hustler Z 66" XR7 Deck Adapter, 107136
Hustler Z 72" XR7 Deck Adapter, 107144

To the new owner

The purpose of this manual is to assist owners and operators in maintaining and operating the Hustler Z BAC-VAC™. Please read it carefully; information and instructions furnished can help you achieve years of dependable performance.

Using this manual

General operation, adjustment and maintenance guidance is outlined for both the experienced and novice Hustler user. Operating conditions vary considerably and cannot all be addressed individually. Through experience, however, operators should find no difficulty in developing good operating skills suitable to most conditions.

Directions used in this manual, for example RIGHT or LEFT, refer to directions when seated on tractor facing forward, unless otherwise stated.

Photographs and illustrations used were current at the time of printing, but subsequent production changes may cause your machine to vary slightly in detail. Hustler Turf Equipment reserves the right to redesign and change the machine as deemed necessary, without notification. If a change has been made to your machine which is not reflected in this owner's manual, or the parts manual, see your Hustler dealer for current information and parts.

Warranty registration

The Delivery and Warranty Registration form must be completed and signed to validate your warranty protection. As the new equipment owner, you are expected to see that the card is completed and forwarded to Hustler Turf Equipment at time of delivery.

Be sure to register the tractor plus each attachment that displays a model and serial identification number plate with Hustler Turf Equipment.

IMPORTANT: Any unauthorized modification, alteration, or use of non-approved attachments voids the warranty and releases Hustler Turf Equipment from any liability arising from subsequent use of this equipment.

Parts and service

Use original Hustler replacement parts only. These parts are available through your local Hustler dealer. To obtain prompt, efficient service, always provide the following information when ordering parts:

1. Correct part description and number, as given in the parts manual supplied with your owner's packet.
2. Correct model number.

All warranty repair and service must be handled through an authorized Hustler dealer. Arrangements should be made through your local service center.

For location of nearest dealer, or should you need further assistance, contact your Hustler Turf Dealer.

SAFETY PRECAUTIONS



This safety alert symbol is used to call attention to a message intended to provide a reasonable degree of **PERSONAL SAFETY** for operators and other persons during the normal operation and servicing of this equipment.

DANGER – Denotes immediate hazards which **WILL** result in severe personal injury or death.

WARNING – denotes a potential hazard or unsafe practice which **COULD** result in severe personal injury or death.

All operators should read this manual, or be instructed about safe operating and maintenance procedures. This is the owner's responsibility.

Incorrect usage of this machine may result in severe injury. It is the owner's responsibility that all operators read this manual thoroughly and be properly trained in operation and maintenance before attempting to set-up, adjust, or service this

machine. This owner's manual contains many safety precautions that must be followed to avoid injury.

- ▲ Always stop tractor engine, place steering control levers in the park brake position and remove ignition key when leaving operator's seat.
- ▲ Always be aware of any obstructions, especially small children, when backing or unloading the hopper.
- ▲ Always keep safety shields and covers in place while operating machine.
- ▲ Never work on blower assembly or mower deck when the tractor engine is running.
- ▲ Never operate machine with the hopper in the raised position except for unloading.
- ▲ Never attempt high speed maneuvering in crowded or congested areas.
- ▲ Always operate with complete BAC-VAC™ system or safety deflector in place.
- ▲ Before operating an ATZ unit on a slope over 15 degrees, if a BAC-VAC™ is mounted to the ATZ, it will be necessary to put the unit back in the original ATZ configuration. Remove the BAC-VAC™ and front wheel weights from the tractor and re-attach the drive wheel weights, frame weights and the front and rear mount legs to the tractor.



Stop tractor engine, remove ignition key.
Engage park brake.
Use a probe to clean debris from spout.
Never engage mower deck unless hose is clamped in place on blower outlet.



Whirling blades! Keep hands and feet away.
Beware of thrown objects.



Never operate the mower deck with the deflector removed or in a raised position, except when the grass catching attachment is being used.

ASSEMBLY INSTRUCTIONS

These instructions apply to the assembly of the Hustler BAC-VAC™ to a tractor equipped with either a 72", 66" or 60" XR7 deck.

It is intended that these units be installed by trained Hustler service personnel. If additional assistance is required, contact the Hustler Customer Service Department.

Directions given in these instructions, for example left and right, refer to direction while seated on the tractor.

Before proceeding, read thru the following instructions to familiarize yourself, while at the same time identify and inventory kit parts supplied.

Unpack and inspect all parts. Notify carrier of any shipping damages immediately.

Parts list

Ref. No.	Part No.	Description	Qty.
1	022608	Hose clamp	2
2	023036	HP .148 x 2.690	2
3	063560	CE .625 x 2.00 x .156 x 1.8	2
4	324277	Blower F/A	1
5	347674	Mount bracket w/a	1
6	353219	BAC-VAC hopper assembly	1
7	600775	Flexible tubing	1
8	728030	FW .656 x 1.312 x .090 ZN	4
9	353243	Weights	2
10	728599	U-bolt	2
11	712893	FW .406 x 1.25 x .12	4
12	722108	Wing nut	4
26	378760	Exhaust extension Kawasaki & Honda	1
	788919	Exhaust extension Kohler	1
27	769299	Screw	1
28	705954	CS .500-13 x 1.25 HX G5 ZNYC	2
29	767962	FW .531 x 1.063 x .090 SAE	4
30	008193	NT .500-13 HX G5 ZNYC	2
	107102	Owner's manual packet	1

Deck adapter kits

When mounting the BAC-VAC™ to a 54" XR7 deck, an adapter kit, p/n 107110, must be used. The following parts are included with this kit. Fig. 3-2

Ref. No.	Part No.	Description	Qty.
13	770396	Belt	1
14	025395	CB .375-16 x 1.00 Std. CD	2
15	107784	Blower, pivot mount w/a	1
16	767954	FW .406 x .812 x .60 HD ZN	2
17	086660	NT .375-16 HXZN NL	2
18	074252	CS .50-13 x 1.50 HX G5 ZN	1
19	019471	CE .380x1.75x1.50x1.60 ZN	1
20	103036	Blower mount w/a	1

21	023036	HP .148x2.690 ZN	1
22	600650	Pulley, Double Drive	1
23	108896	Pulley cover	1
24	710194	CB .375-16 x 1.50 Std. CD	1
31	109038	Blower guard	1
32	036236	CS .312-18 x 1.00 HX G5	2
33	768523	FW .343 x .687 x .051/.080 H	2
34	058776	NT .312-18 HXZY NL	2

When mounting the BAC-VAC™ to a 60" XR7 deck, an adapter kit, p/n 107128, must be used. The following parts are included with this kit. Fig. 3-2

Ref. No.	Part No.	Description	Qty.
13	787978	Belt	1
14	025395	CB .375-16 x 1.00 Std. CD	1
15	102913	Blower, pivot mount w/a	1
16	767954	FW .406 x .812 x .60 HD ZN	2
17	086660	NT .375-16 HXZN NL	2
18	074252	CS .50-13 x 1.50 HX G5 ZN	1
19	019471	CE .380x1.75x1.50x1.60 ZN	1
20	103036	Blower mount w/a	1
21	023036	HP .148x2.690 ZN	1
22	524785	Pulley, Double Drive	1
23	108898	Pulley cover	1
24	710194	CB .375-16 x 1.50 Std. CD	1
25	107045	Blower spacer	1
31	109039	Blower guard	1
32	036236	CS .312-18 x 1.00 HX G5	2
33	768523	FW .343 x .687 x .051/.080 H	2
34	058776	NT .312-18 HXZY NL	2

When mounting the BAC-VAC™ to a 66" XR7 deck, an adapter kit, p/n 107136, must be used. The following parts are included with this kit. Fig. 3-2

Ref. No.	Part No.	Description	Qty.
13	787978	Belt	1
14	025395	CB .375-16 x 1.00 Std. CD	2
15	102913	Blower, pivot mount w/a	1
16	767954	FW .406 x .812 x .60 HD ZN	2
17	086660	NT .375-16 HXZN NL	2
18	074252	CS .50-13 x 1.50 HX G5 ZN	1
19	019471	CE .380x1.75x1.50x1.60 ZN	1
20	103036	Blower mount w/a	1
21	023036	HP .148x2.690 ZN	1
22	524785	Pulley, Double Drive	1
23	108900	Pulley cover	1
31	109040	Blower guard	1
32	036236	CS .312-18 x 1.00 HX G5	2
33	768523	FW .343 x .687 x .051/.080 H	2
34	058776	NT .312-18 HXZY NL	2

When mounting the BAC-VAC™ to a 72" XR7 deck, an adapter kit, p/n 107144, must be used. The following parts are included with this kit. Fig. 3-2

Ref. No.	Part No.	Description	Qty.
13	787986	Belt	1
14	025395	CB .375-16 x 1.00 Std. CD	2
15	102913	Blower, pivot mount w/a	1
16	767954	FW .406 x .812 x .60 HD ZN	2
17	086660	NT .375-16 HXZN NL	2
18	074252	CS .50-13 x 1.50 HX G5 ZN	1
19	019471	CE .380x1.75x1.50x1.60 ZN	1
20	103036	Blower mount w/a	1
21	023036	HP .148x2.690 ZN	1
22	770388	Pulley, Double Drive	1
23	108902	Pulley cover	1
31	109041	Blower guard	1
32	036236	CS .312-18 x 1.00 HX G5	2
33	768523	FW .343 x .687 x .051/.080 H	2
34	058776	NT .312-18 HXZY NL	2

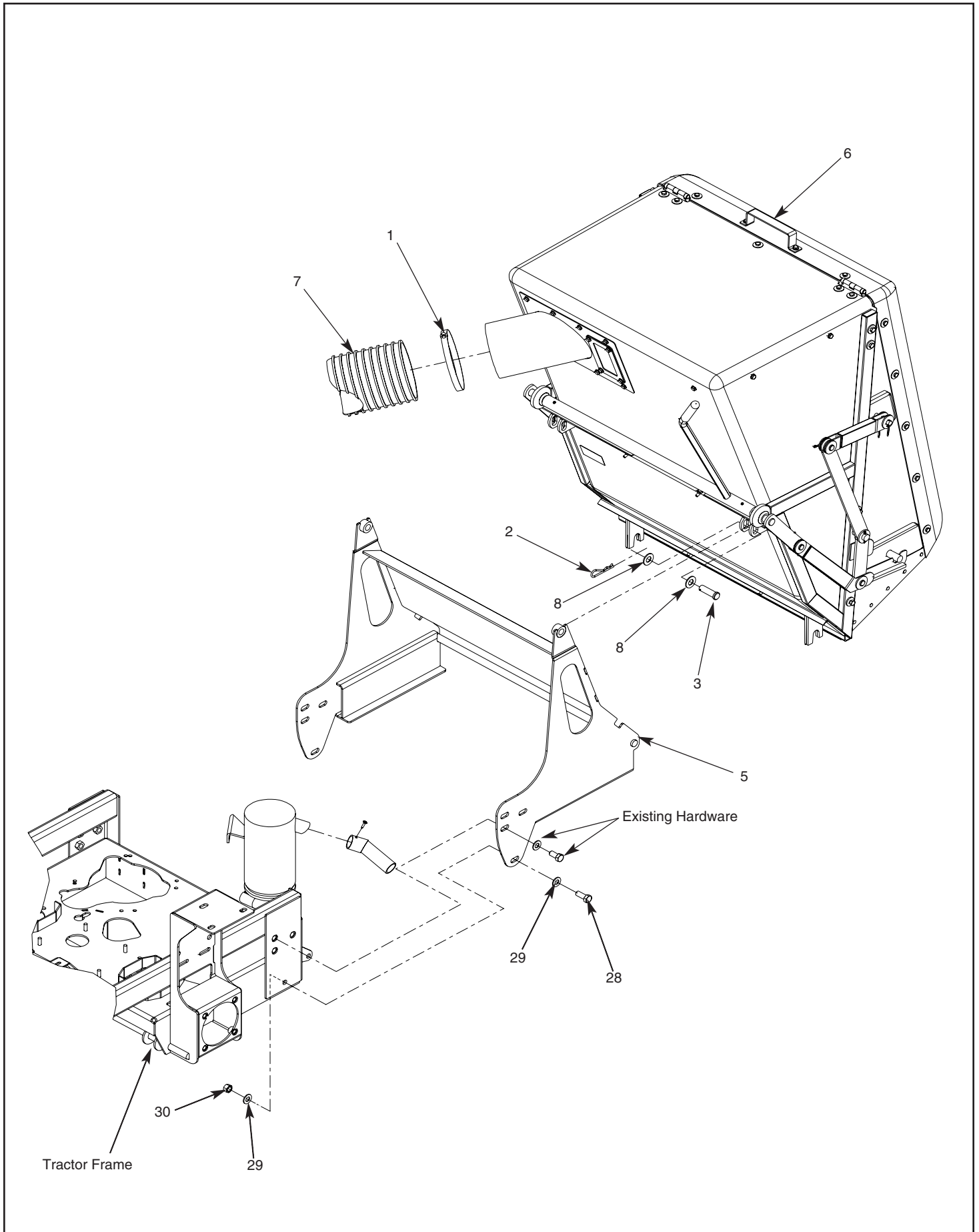


Figure 3-1

54"/60"/66"/72" XR7 Decks

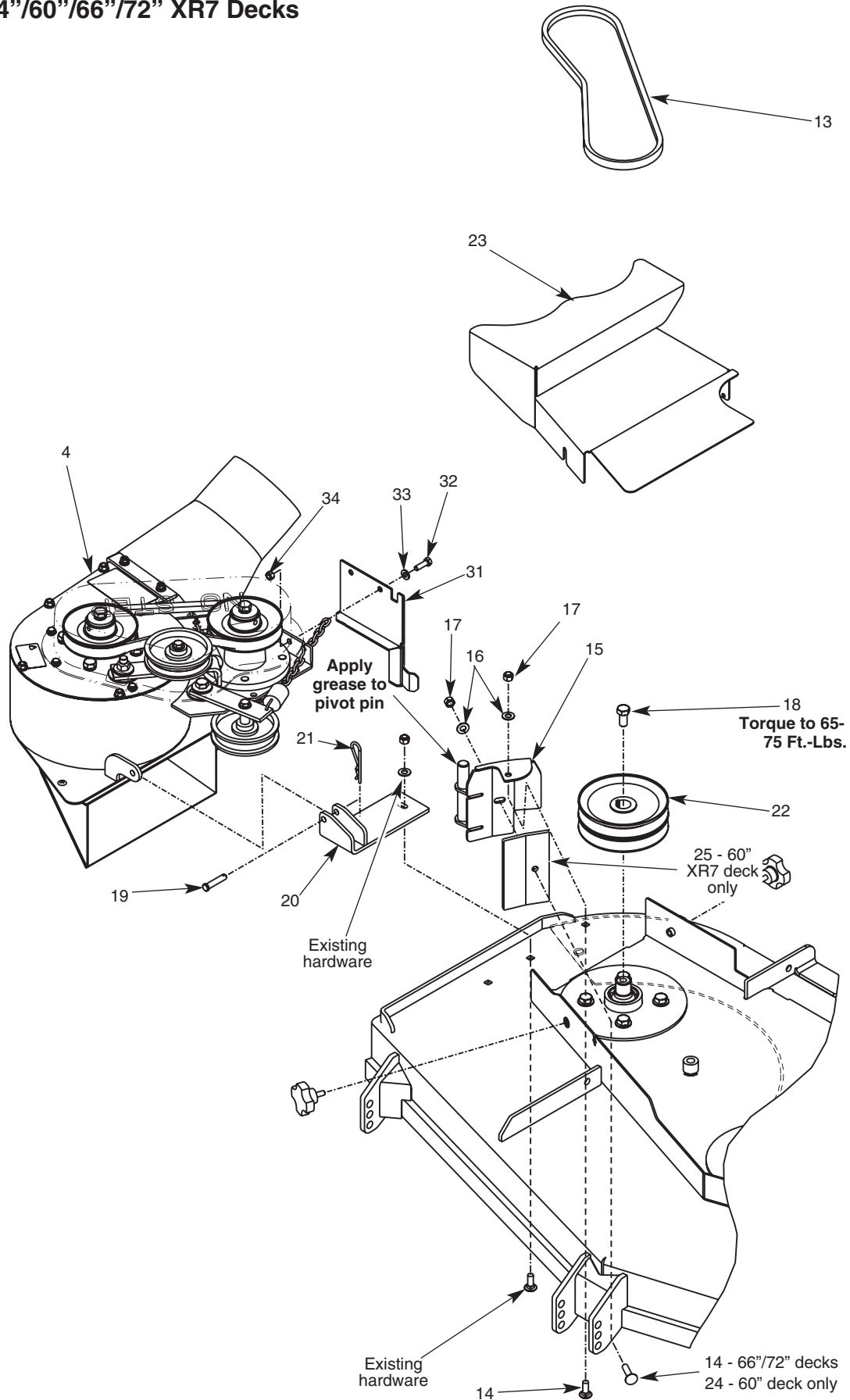


Figure 3-2

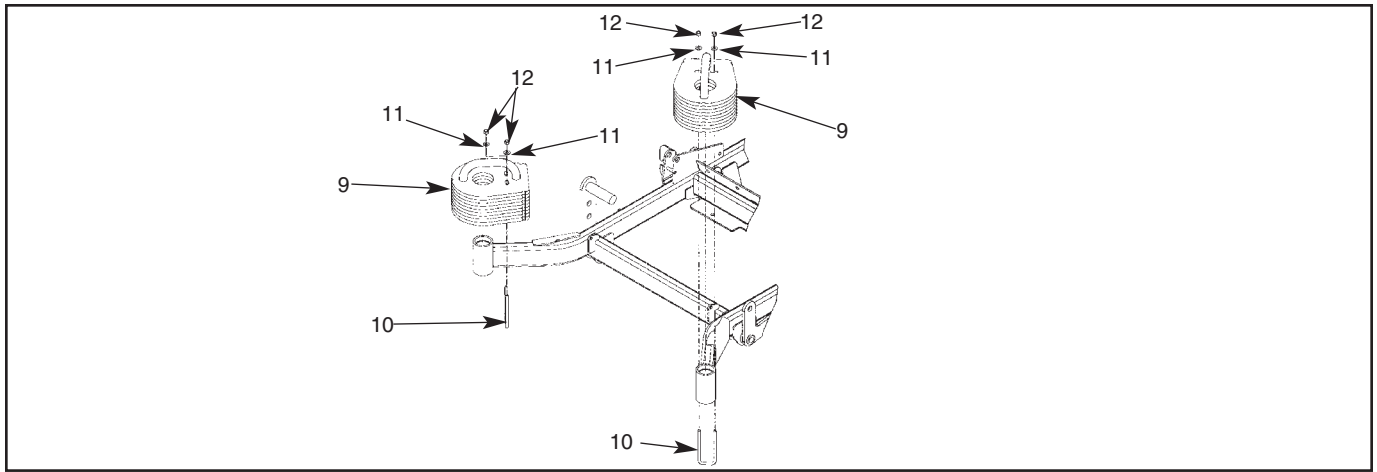


Figure 3-3

Mower deck preparation

1. Park the tractor on a flat surface and place the steering control levers in the park brake position. Shut off the ignition switch and remove the key from the switch. Disconnect the negative battery cable.
2. Remove the right side pulley cover, discharge chute and discharge chute bracket.
NOTE: Retain these parts as they will be re-installed when the BAC-VAC™ is removed.
3. Mount the new double pulley. Torque top spindle bolt to 65-75 ft.-lbs.
4. Attach the blower mount (Ref. #20), supplied with the correct adapter kit, to the deck per Fig. 3-2.
5. Attach the blower mount pivot (Ref. #15), supplied with the correct adapter kit, to the deck per Fig. 3-2.
6. Attach blower guard (Ref. #31) to the blower assembly. Fig. 3-2
7. Attach the blower assembly to the deck per Fig. 3-2.
8. Re-adjust the blower mount (Ref. #20), if necessary, to minimize the gap between the deck opening and blower housing. Tighten all hardware.
9. Install and route the blower belt (Ref. #13), supplied with the correct adapter kit, to the deck per Fig. 3-2. .
10. Swing the housing so that it is tight against the deck and insert the clevis pin (Ref. #19) and hair pin (Ref. #8) thru the latch.
11. Reconnect the negative battery cable.



WARNING: Do not operate deck without deflector chute or BAC-VAC™ in place.

Tractor preparation

1. Remove the rear engine guard.
2. Slide the correct exhaust extension onto the muffler exhaust tube. Use part number 378760 for a Honda or Kawasaki engine. Use part number 788919 for a Kohler engine. Rotate the extension so the hole is located on top and drill a 5/32" dia. hole in the muffler tailpipe. Attach the exhaust extension using the screw (769299) per Fig. 3-5



Figure 3-4

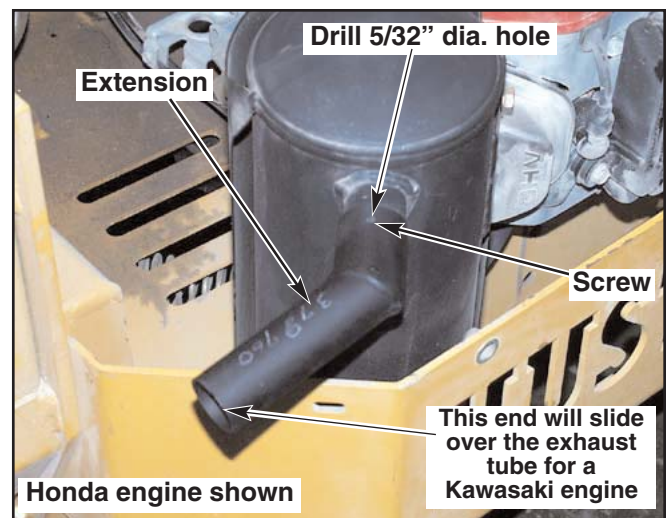


Figure 3-5

NOTE: One end of extension (378760) is sized to fit a Honda engine muffler. The other end is sized to fit a Kawasaki engine muffler.

3. Hustler ATZ tractors only:

A. Remove the drive wheel weights and the frame weights, located between the drive wheels, from the tractor.

B. Remove the front and rear mount legs of the ROPS structure. The two post ROPS structure will remain. Fig. 3-6

IMPORTANT: Before operating the unit on a slope, if a BAC-VAC™ is mounted to the ATZ it will be necessary to remove the BAC-VAC™ and front wheel weights from the tractor. It will also be necessary to re-attach the drive wheel weights, frame weights and the front and rear mount legs to the tractor.

4. Bolt the mount bracket w/a to the tractor per Fig. 3-1.
5. Roll the BAC-VAC™ into position and slide the hopper's hooks over the rod on the mount bracket per Fig. 3-4. Swing the BAC-VAC™ up and forward until it goes over center.
6. Secure the hopper to the tractor using the clevis pins and flat washers shown in Fig. 3-1.

Final Connection

1. Attach the BAC-VAC™ flexible tubing (600775) to the blower and to the hopper using the clamps per Fig. 3-1.

NOTE: The flexible tubing is long enough to use with the 66" and 72" XR7 deck. It will need to be shortened before it can be used with the other decks. Cut the flexible tubing to a length of 50" when used with a 54" and 60" XR7 deck.

2. Attach the weights furnished with the BAC-VAC™ per Fig. 3-4 and Fig. 3-7.

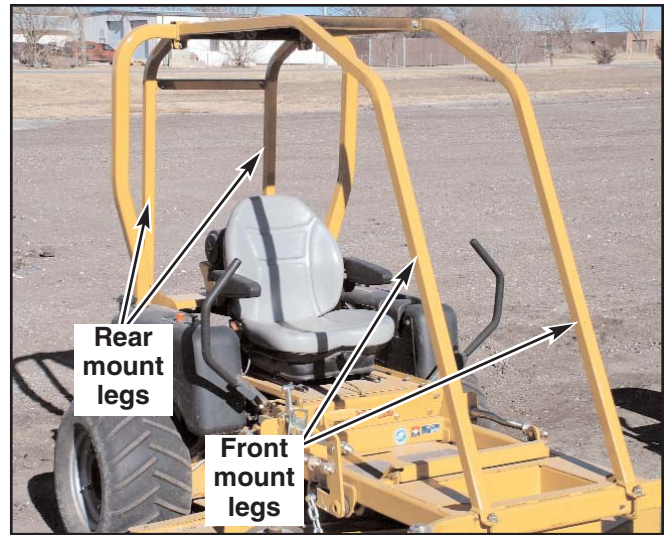


Figure 3-6



Figure 3-7

OPERATION

Vacuum pickup and collection

Follow normal tractor and mower deck start-up and operating procedures as outlined in the tractor owner's manual. The blower assembly will operate when the mower deck clutch switch is engaged. To stop the blower assembly, return the deck clutch switch to the disengaged position.

Proceed to mow in the normal manner and occasionally glance at the window located in the upper front of the hopper (Fig. 4-1). The window is designed to allow the operator to see when the hopper is getting full. When the hopper is filled, move the deck clutch switch to the disengaged position. Then drive the machine to the unloading area.

The tube is made of a clear material which allows the operator to see when grass is starting to clog the tube. When this occurs either the hopper is full and needs dumped or the tube is clogged and needs cleaned out. It is best that the hopper be unloaded before the blower and tube areas become clogged. If clogging occurs, it will be necessary to clean the blower and tube areas of all material before starting to mow again.



WARNING: Make certain the engine is turned off and the ignition key is removed from the ignition switch before cleaning the blower and hopper chute areas.



WARNING: Never place hands or feet into the blower housing spout. There is an impeller located inside the housing that will cause severe injury. Use a probe to clean debris from spout.



WARNING: Never engage mower deck unless hose is clamped in place on blower outlet. Fig. 5-2



Figure 4-1



Figure 4-2

When the hopper is full, turn the deck and the blower off (deck clutch switch in the disengaged position). Then drive the machine to the unloading area.

Unloading

Your BAC-VAC™ is designed to dump it's load in a designated area on the ground.



WARNING: Make certain the deck clutch switch is in the disengaged position before unloading.

To dump the BAC-VAC™, place the control levers in the park brake position to prevent accidental tractor movement or engine cutting in and out. Pull forward on the hopper door release lever (Fig. 4-2) when the hopper is in the correct position for dumping. The lever will go over-center when the door is open all of the way (Fig. 4-3).



WARNING: Maintain a firm hold on the hopper door release lever. When it goes over-center, while closing the door, it will act like it has a



Figure 4-3

spring loaded and will come forward with force.

Keep the hopper door open until all of the clippings have been discharged from the hopper. Then lower the hopper door by moving the hopper door release lever rearward. The lever will go over-center when the door is closed all the way. Engage the deck clutch switch and continue mowing.

NOTE: It may be necessary to drive forward to clear the just unloaded pile of grass before the hopper door will close.



WARNING: Maintain a firm hold on the hopper door release lever. When it goes over-center, while closing the door, it will act like it is spring loaded and will come forward with force.



WARNING: Never work on the blower assembly or mower deck when the tractor engine is running.

To clean the hopper, blower housing, tube, and chute areas use the following procedure:

1. Turn the engine off and remove the key from the ignition switch.
2. Remove the tube from the hopper.
3. Remove the hair pins, clevis pins and flat washers that attach the hopper to the hopper mount support.
4. Grab the top handle (Fig. 4-3) and pivot the hopper top towards the rear until it goes over center and the wheels contact the ground. Wheel the hopper away (Fig. 4-4).
5. Remove the tube from the blower housing chute.
6. Clean the hopper assembly

The tube can be cleaned by using soapy water and washing the inside of the tube. Rinse with water.

NOTE: It will be necessary to use a power washer of some type to remove all of the debris from the inside of the



Figure 4-4

hopper and the blower.

Attaching BAC-VAC™

To attach the BAC-VAC™: Park the tractor on a flat surface and wheel the BAC-VAC™ to the tractor and slide the hopper's hooks over the rod on the mount bracket per Fig. 4-5. Then, swing the top of the hopper towards the operator's platform. When the BAC-VAC™ is tilted far enough forward it's weight will carry it forward. Insert the clevis pins, flat washers, and hair pins thru the BAC-VAC™ tabs and the mount support on the tractor. Attach the tube to the inlet tube on the BAC-VAC™ and clamp tight (Fig. 3-1).

NOTE: If the tube will not slide over the inlet tube, spray a solution of soapy water on the inside of the tube. This will make the surface slick which will allow it to slide on easier.



WARNING: Never engage mower deck unless hose is clamped in place on blower outlet. Fig. 4-6

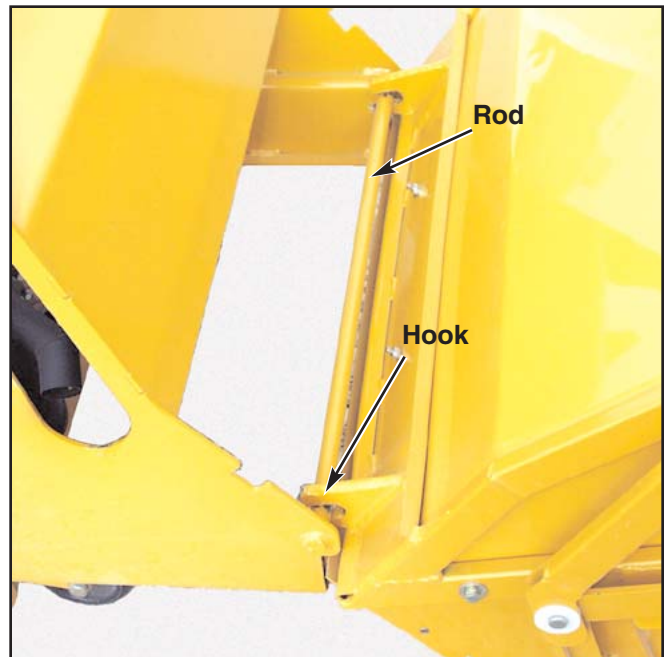


Figure 4-5

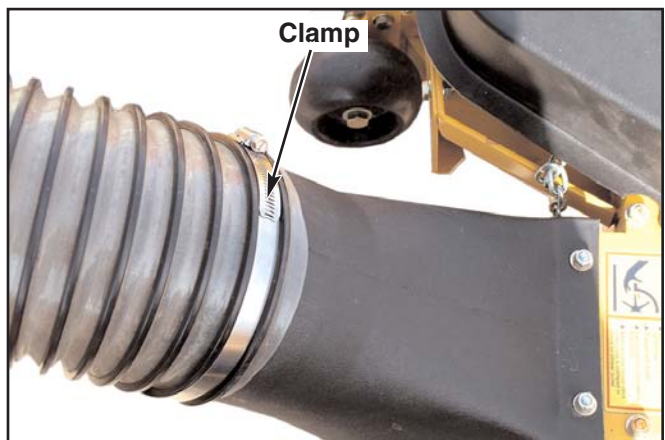


Figure 4-6

MAINTENANCE

Hopper assembly

The screens located inside the hopper are accessible when the hopper door is in the raised position. For maximum performance, these screens must be kept clean by brushing or washing as required.

Blower housing and transfer tube



WARNING: Never work on the blower assembly or mower deck when the tractor engine is running.

The blower and transfer tube (Fig. 5-1) should be kept clean and free of any accumulation of matted clippings or other obstructions. Occasional clogging may also occur when working in heavy, wet or matted grass.



WARNING: Never place hands or feet into the blower housing spout. There is an impeller located inside the housing that will cause severe injury. Use a probe to clean debris from spout.



WARNING: Never engage mower deck unless hose is clamped in place on blower outlet

To service the blower housing: remove the clevis pin and swing the housing away from the deck.

To service the transfer tube, loosen the hose clamp and remove tube from either the top or lower end. The tube can be cleaned by using soapy water and washing the inside of the tube with a pressure washer. Rinse with water.

Blower drive belt

The blower drive belt (Fig. 5-2) is located under the belt shield. This belt is spring tensioned and should not need adjustment. When replacing the belt the spring extension should be 6" hook to hook.

To inspect or replace, remove the clevis pin and swing the

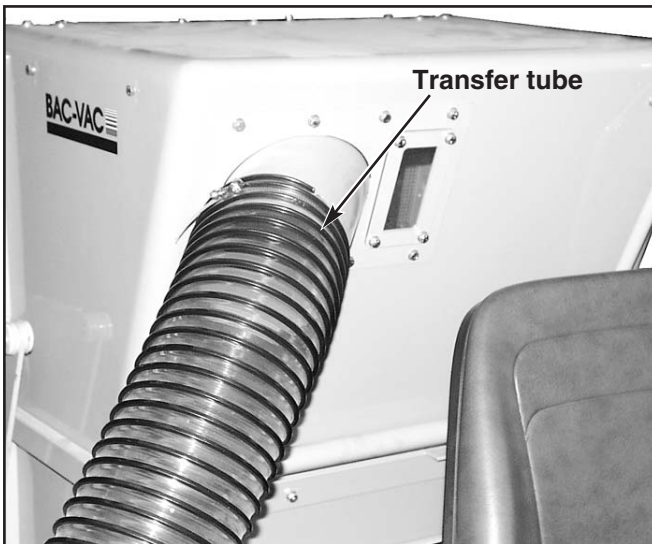


Figure 5-1

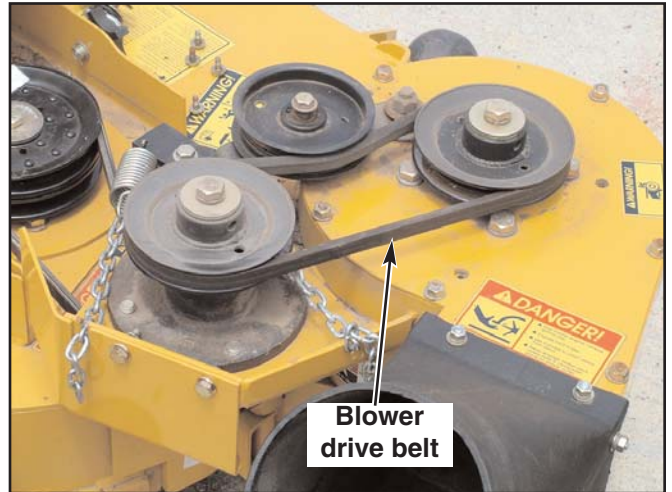


Figure 5-2

housing open. This loosens the belt and allows it to be removed.

When belt replacement becomes necessary, check the condition of the pulleys. Clean the grooves and check for excessive wear. A new belt should not run against the bottom of groove. If it does bottom out, the pulley needs replacing.

Blower spindle jack shaft

The blower spindle jack shaft assembly requires lubrication after every 500 hours of use or annually, whichever occurs first. The spindle is equipped with two grease zerks (Fig. 5-3). They are accessible by unlatching the blower housing from the deck and pivoting it outward. Use SAE multi-purpose grease, fill until grease flows from side of zerk (one or two ounces maximum).

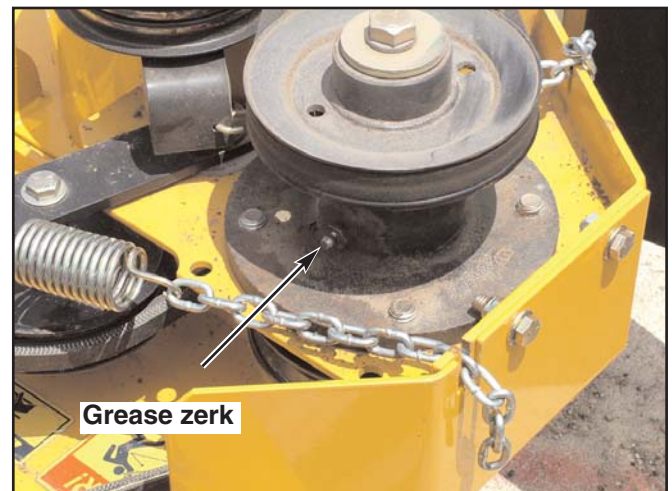


Figure 5-3

STORAGE

When your mower is to set idle for a period of time, scrape and remove the matted grass material from inside the hopper and clean the permanent screen. Clean the discharge area in the blower assembly likewise. A light coating of oil applied to these surfaces will help retard rusting.

Check for loose or missing hardware, tighten or replace. Also check for badly worn or damaged parts, consider replacing them at this time. Touch up chipped paint areas, your Hustler dealer has aerosol spray paint available.

INDEX

	PAGE		PAGE
Attaching BAC-VAC™	4-2	Safety precautions	2-1
Blower drive belt	5-1	Storage.....	6-1
Blower housing and transfer tube	5-1	To the new owner.....	1-1
Blower spindle jack shaft	5-1	Tractor preparation.....	3-4
Deck adapter kits	3-1	Unloading	4-1
Final connection	3-5	Using this manual.....	1-1
Hopper assembly	5-1	Vacuum pickup and collection.....	4-1
Mower deck preparation	3-4	Warranty registration	1-1
Parts list	3-1		
Parts and service.....	1-1		